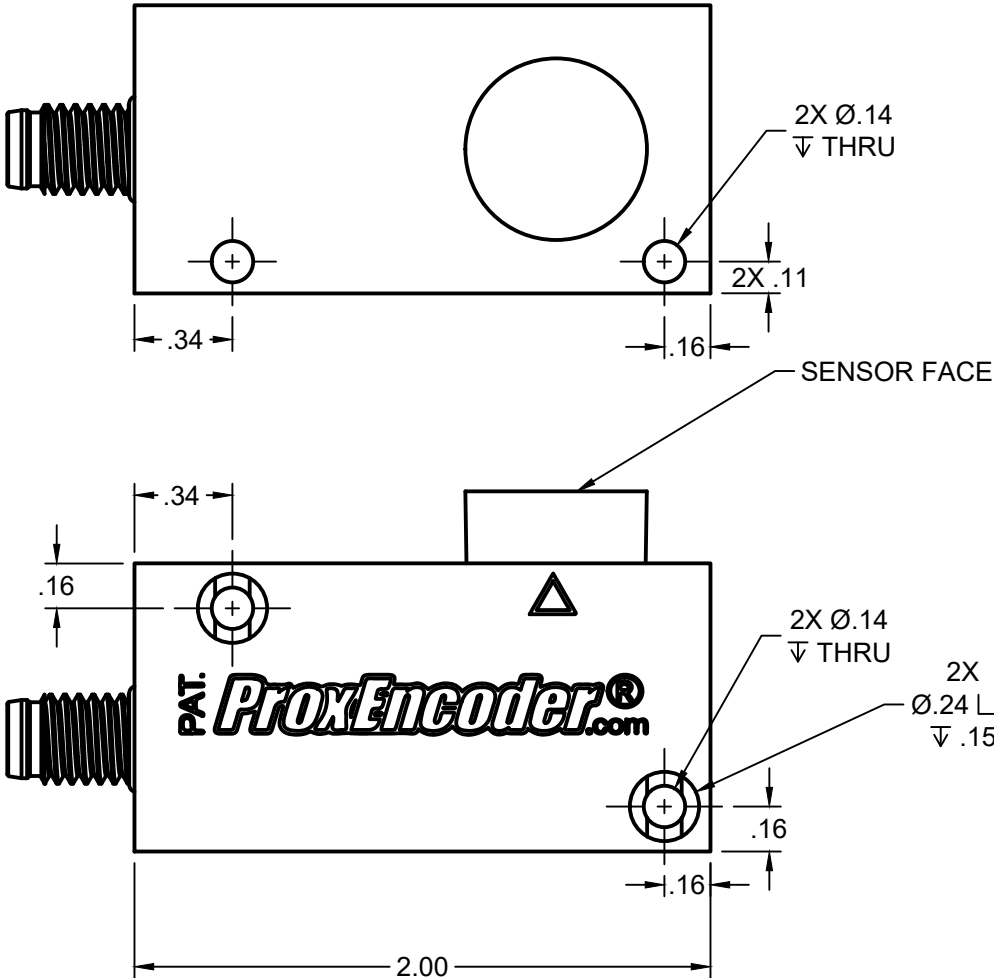
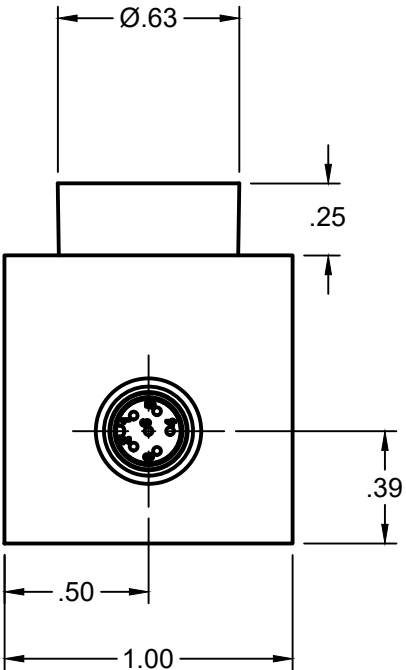
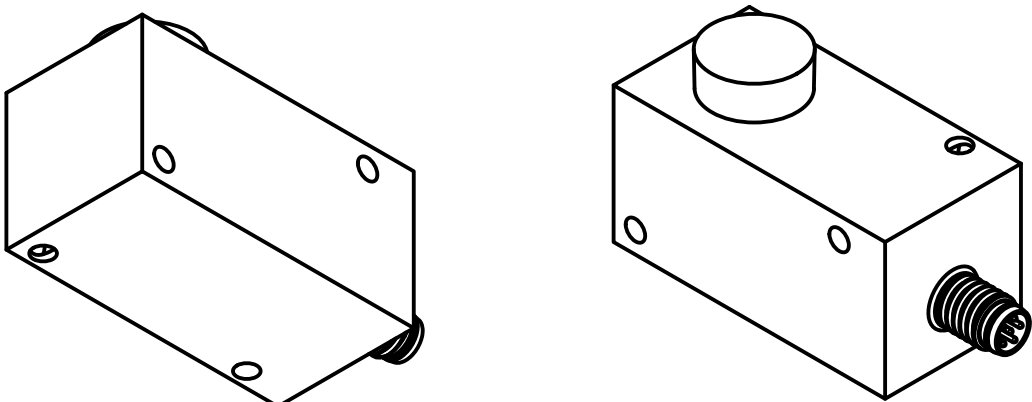


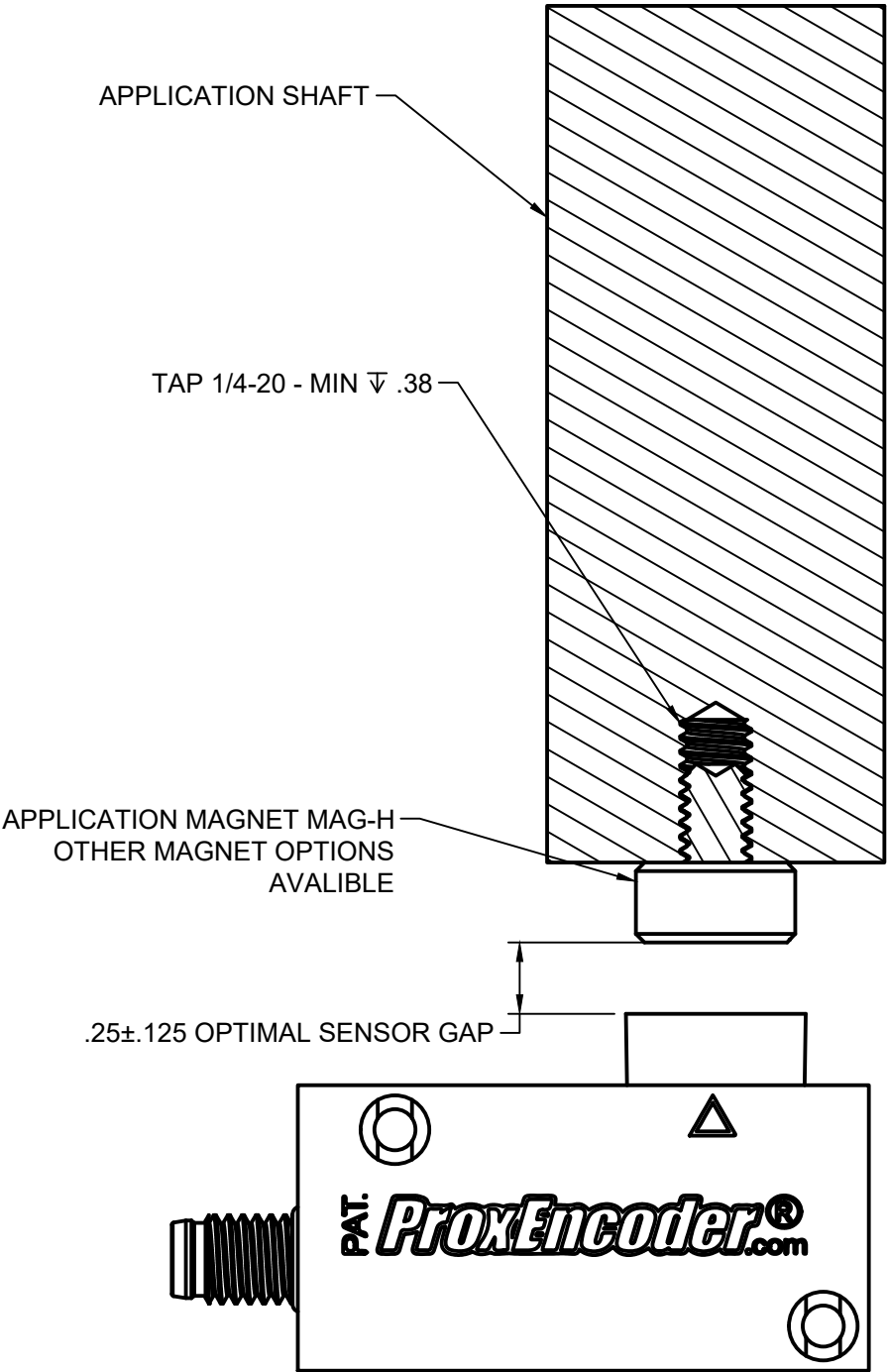
- INTERFACE DETAILS AND NOTES:
1. APPLICATION SHAFT Ø.375" MINIMUM WHEN USING MAG-H APPLICATION MAGNET. TAP 1/4-20 A MINIMUM DEPTH OF .375".
 2. 0.25" SENSOR GAP DISTANCE IS OPTIMAL FOR NORMAL INSTALLATION. THIS IS DEPENDNT ON MOUNT AND MATERIALS.



8 PIN M8 CONNECTOR
OTHER CONNECTION OPTIONS AVAILBLE

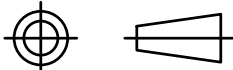


ISOMETRIC VIEWS
SCALE:NONE



CONFIDENTIAL - ALL RIGHTS RESERVED
DISCLOSURE OR DUPLICATION PROHIBITED

UNLESS OTHERWISE SPECIFIED:
DIMENSIONS ARE IN DECIMAL INCH



MANUFACTURING TOLERANCES

.X	.XX	.XXX	ANGLE
±.015	±.005	±.001	±1°

DRAWN:
T.WOLFF

DATE:
4/1/2024

CHECKED:
A.MINSTER

APPROVED:
6/28/2024

PART #:
PEBX-CUST ASSY

EPICOR #:

REV.

SIZE:
B

JORAL

WWW.JORALLC.COM

DESCRIPTION:
18MM PROXENCODER
NON-CONTACT ROTARY

SCALE:
3:2

SHEET:
1/1